

Good Afternoon,

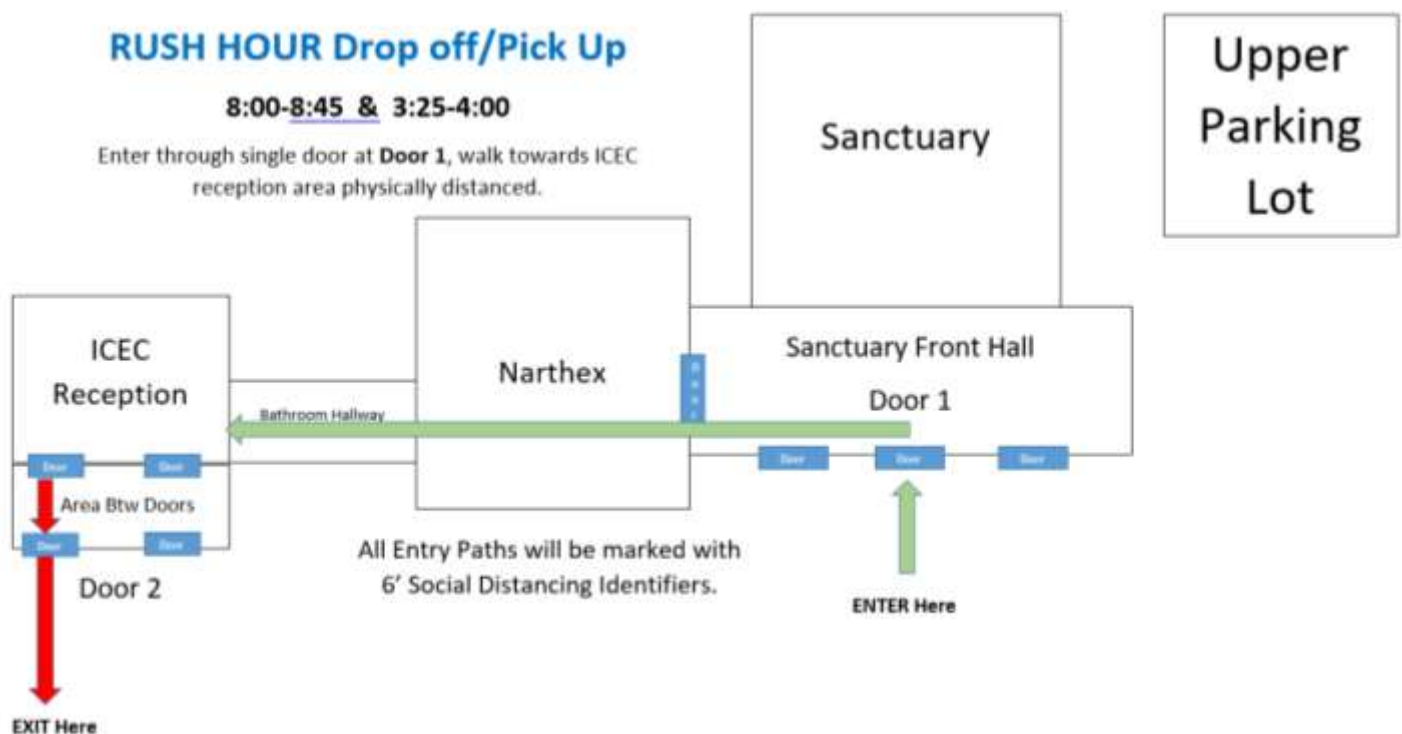
With our success from last year, drop off will be reserved to the Lobby area of ICEC with requested physical distancing. We encourage you to give yourself some extra time at the start of the school year until everyone is comfortable with the process.

For Pick Up, you will be allowed to go to your child's CDC room, but you will still need to enter via the correct door defined below.

For the hours between 8-8:45 & 3:25-4 (we will deem this 'Rush Hour') drop off and pick up will be done via **Door 1 (Main Sanctuary Doors)**. Drop off and pick up between the hours of 8:45 and 3:25 should be done through **Door 2 (the main entrance to ICEC)**. Diagrams for both scenarios are depicted below.

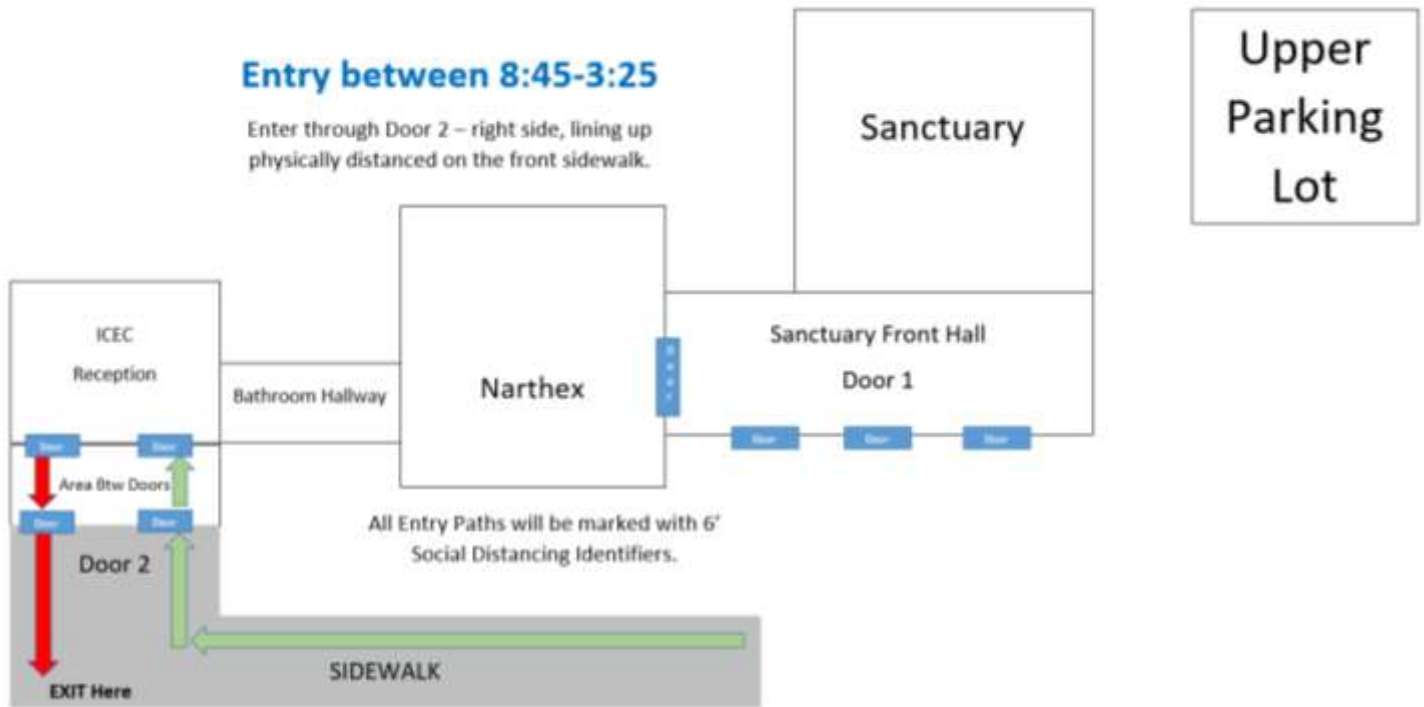
Drop off / Pick Up Guidelines

- Parking
 - You must park your car in the upper lot next to the sanctuary
 - Handicapped persons will be allowed to park in handicapped parking in front of the school, but **MUST** have a handicapped indicator on their car.
 - Parents with infants enrolled in the infant room at CDC will be allowed to use the non-handicapped spaces in the front of our school.
- Physical distancing will be requested and guided through markings on the floor / sidewalk in the waiting areas.
- Please exit only through doors defined.
- All infants should be in their car carriers.



Entry between 8:45-3:25

Enter through Door 2 – right side, lining up physically distanced on the front sidewalk.



Procedures

- Upon arrival for drop off an ICEC employee will escort your child to their CDC classroom. If you have any important information to convey to your classroom, please use the BLOOMZ app.