

Good Afternoon Parents of CDC 4,

With the success from last year, ICEC will continue our Drop off for CDC 4 at Door 3 during 'Rush Hour' and the Lobby area of ICEC during all other times.

For Pick Up, you may use the carpool option at Door 3 or you may enter the building and pick up your child from the CDC4 door.

For the hours between 8-8:45 & 3:25-4 (we will deem this 'Rush Hour') drop off and pick up can be done via Door 3 (Portico Doors). Drop off and pick up between the hours of 8:45 and 3:25 will require you to enter through Entrance 2 (the main entrance to ICEC). Diagrams for both scenarios are depicted below.

Drive Up Drop off / Pick Up Guidelines for Rush Hour (8-8:45, 3:25-4)

- Student will be driven up to the portico entrance using either entrance off of W. Ingomar Road.
- Everyone is to remain in their car until the child is asked to exit by a staff member.
- CDC4 Children with younger siblings will follow their siblings drop off pick up procedure.

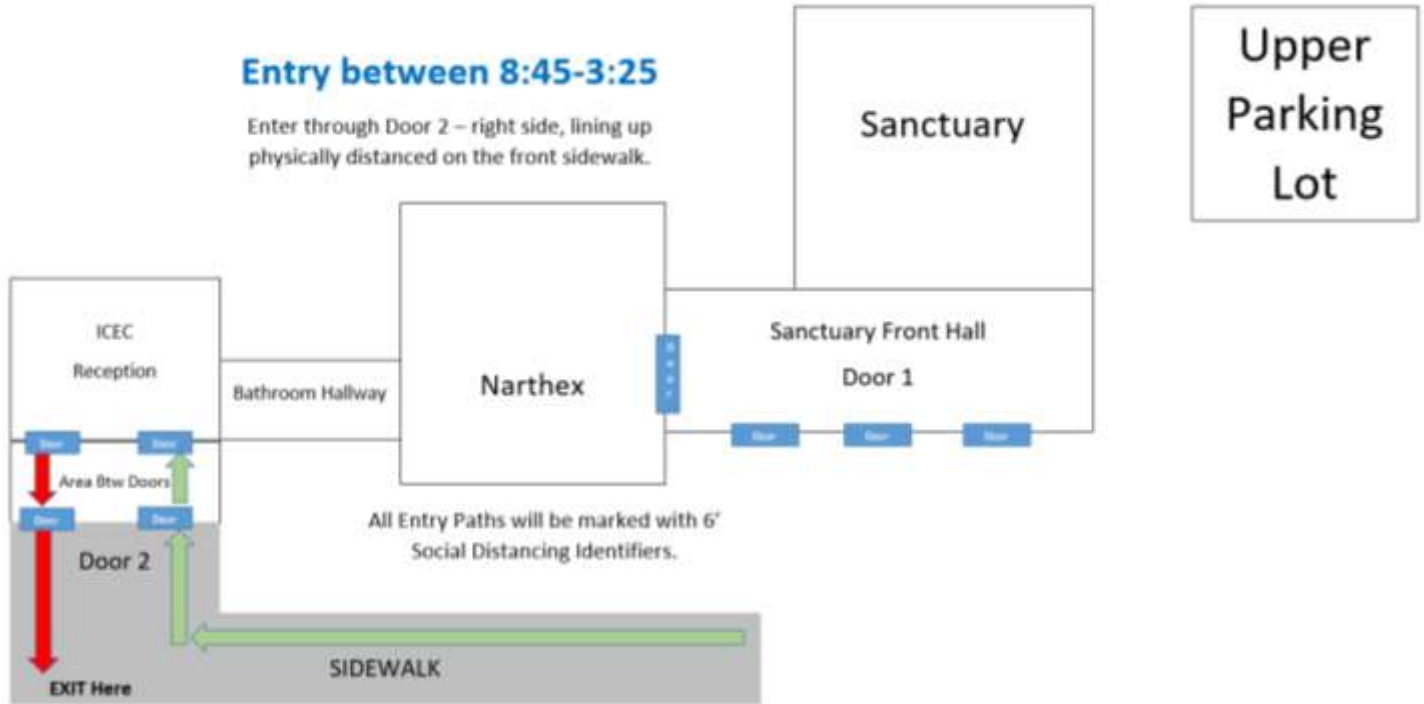


Drive Up Drop off / Pick Up Guidelines during Non-Rush Hour (8:45-3:25)

- Parking
 - You must park your car in the upper lot next to the sanctuary
 - Handicapped persons will be allowed to park in handicapped parking in front of the school, but MUST have a handicapped indicator on their car.
- Physical distancing will be requested and guided through markings on the floor / sidewalk in the waiting areas.
- Please exit only through doors defined.

Entry between 8:45-3:25

Enter through Door 2 – right side, lining up physically distanced on the front sidewalk.



Procedures

- For Drop Off, an ICEC employee will escort your child to their CDC classroom. If there is important information to communicate to your CDC classroom, please use the BLOOMZ app to convey that information.